

## Malayan bridle snakes at the Central Nature Reserves

**Subjects:** Malayan bridle snake, *Dryocalamus subannulatus* (Reptilia: Serpentes: Colubridae).

**Subjects identified by:** Contributors.

**Location, date and time:** Singapore Island, Central Catchment Nature Reserve and Bukit Timah Nature Reserve; August, October & December 2008.

**Habitat:** Parkland bordered by primary rainforest (Bukit Timah Nature Reserve), and secondary lowland forest and freshwater swamp-forest (Nee Soon swamp-forest and Upper Seletar).

**Observers:** Contributors and others.

**Observation:** Three separate records of snakes, each around 60 cm in total length, are herein featured.

1) Bukit Timah Nature Reserve, Hindhede Nature Park; 30 August 2008, 0018 hrs. One found strapped on a wooden fence by Leong Tzi Ming. Fig. 1 shows the body, while the head and anterior body are in Fig. 2.

2) Central Catchment Nature Reserve, Nee Soon swamp-forest; 18 October 2008. One example seen in the evening creeping on the vertical surface of a concrete pillar supporting a large water pipe, at least 2 metres off the ground (Fig. 3), by Ng Bee Choo and others.

3) Central Catchment Nature Reserve, Upper Seletar Reservoir Park, adjacent forest; 6 December 2008, 2021 hrs. An example was encountered draped over some fallen twigs, about half a metre off the ground (Fig. 4), by Kelvin K. P. Lim and others.

**Remarks:** This distinctively marked snake is locally restricted to the Central Nature Reserves, and is regarded as an endangered species within Singapore (Lim et al., 2008: 163).

**Reference:** Lim, K. K. P., N. Baker, R. Teo & T. M. Leong, 2008. Reptiles. In: Davison, G. W. H., Ng, P. K. L. & H. C. Ho (Eds.). *The Singapore Red Data Book. Threatened Plants & Animals of Singapore*. Second Edition. The Nature Society (Singapore). pp. 160-176.



Fig. 1

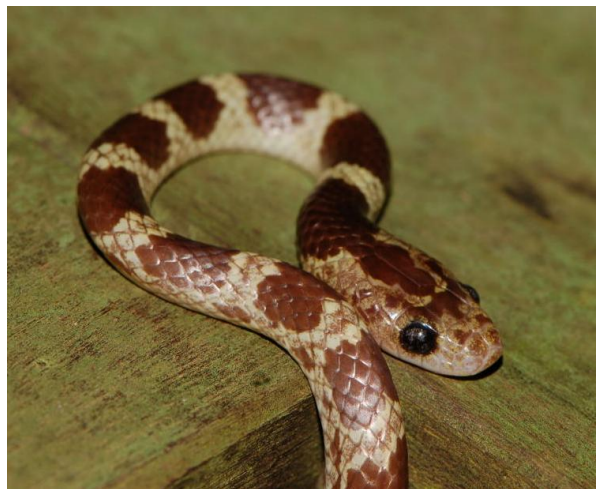


Fig. 2

Fig. 1 & 2. Malayan bridle snake at Hindhede Nature Park on 30 August 2008. Photographs by Leong Tzi Ming



Fig. 3. Malayan bridled snake at Nee Soon swamp-forest on 18 October 2008. Photograph by Ng Bee Choo



Fig. 4. Malayan bridled snake at Upper Seletar forest on 6 December 2008. Photograph by Kelvin K. P. Lim

Contributors: Kelvin K. P. **Lim**, **Leong** Tzi Ming & Ng Bee Choo  
Contact address: [dbslimkp@nus.edu.sg](mailto:dbslimkp@nus.edu.sg) (Lim)