

A tuft-bearing longhorn beetle, *Aristobia approximator*, at Marina Bay

Foo Maosheng

nhmfoom@nus.edu.sg

Subject: *Aristobia approximator* (Insecta: Coleoptera: Cerambycidae).

Subject identified by: Foo Maosheng.

Location, date and time: Singapore Island, Marina Bay at 18 Marina Gardens Drive; 28 October 2017; 1620 hrs.

Habitat: Urban parkland on reclaimed land.

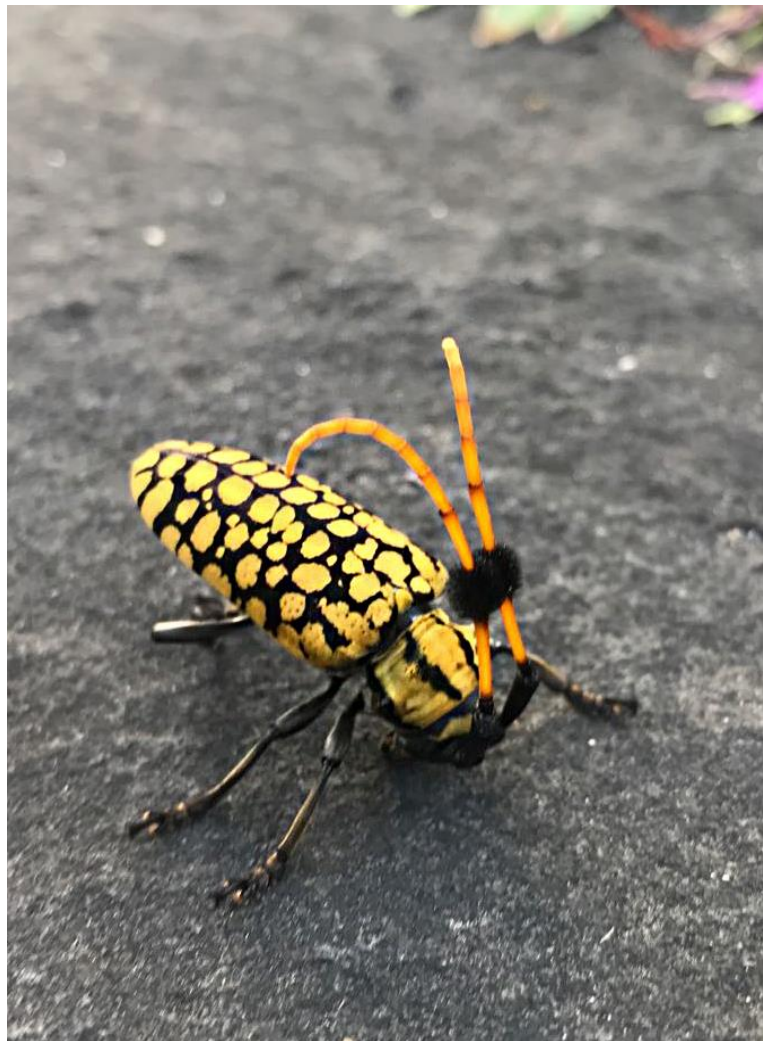
Observer: Mandy Dang.

Observation: A longhorn beetle of about 3 cm body length, with bright yellow spots and a black tuft on each antenna, was found crouched on the surface of the pavement (see accompanying picture with a dorso-lateral view).

Remarks: The featured insect most resembles *Aristobia approximator*, and is tentatively identified as that species. It is characterised by a strong tuft of hair located on each of its antennae, and has been called the ‘common tuft bearing longhorn beetle’ (Agarwala & Bhattacharjee, 2015).

Aristobia approximator has been recorded from India, Myanmar, Vietnam, Laos, Malaysia, Cambodia and Thailand (Ek-Amnuay, 2008). The present record may be the first record of this species in Singapore.

According to Hanboonsong et al. (2013), this beetle is one of the many species of insects that are eaten by people in Thailand.



Photograph by Mandy Dang

References:

- Agarwala, B. K., & P. P. Bhattacharjee, 2015. Redescription of *Aristobia reticulator* (F., 1781) (Coleoptera: Cerambycidae: Lamiinae), with a taxonomic note and record of a new food plant for adults in northeastern India. *The Coleopterist's Bulletin*. 69 (2): 205-212.
- Ek-Amnuay, P., 2008. *Beetles of Thailand*. Siam Zoo and Museum, Chiang Mai, Thailand. 496 pp.
- Hanboonsong, Y., T. Jamjanya, & P. B. Durst, 2013. *Six-legged livestock: edible insect farming, collection and marketing in Thailand*. Food and Agriculture Organization of the United Nations. 53 pp.