

Horned crinoid crab in the Singapore Straits

Subject: Horned crinoid crab, *Ceratocarcinus longimanus* (Crustacea: Brachyura: Pilumnidae).

Subject identified by: Contributors.

Location, date and time: Singapore Straits, off western shore of Pulau Satumu; 18 April 2014; evening.

Habitat: Coral reef, just beyond rocky breakwaters, at about 2 m depth.

Observer: Tan Heok Hui.

Observation: During a night dive to observe mass coral spawning, a male of 13 mm carapace width was observed at the base of a mottled comatulid crinoid (species not identified) at the edge of a coral head. As the colour pattern of the crab is very similar to the host crinoid, it can be difficult to detect (Fig. 1).

Remarks: As it was an unusual find, the crab was collected and deposited in the Zoological Reference Collection of the Lee Kong Chian Natural History Museum under the catalogue number ZRC 2014.0209 (Fig. 2). *Ceratocarcinus longimanus* was first recorded from Singapore waters by Walker (1887). Castro et al. (1995) resolved the taxonomy of this species with material obtained from Singapore in 1992. This species is an obligate commensal of comatulid crinoids and is usually solitary (Castro et al., 1995; Humann & DeLoach, 2010).

References:

- Castro, P., D. G. B. Chia & P. K. L. Ng, 1995. On the taxonomic status of *Ceratocarcinus longimanus* White, 1847 (Crustacea: Decapoda: Brachyura: Eumedonidae), a crab symbiotic with comatulid crinoids. *Raffles Bulletin of Zoology*. 43 (1): 239-250.
- Humann, P. & N. DeLoach, 2010. *Reef Creature Identification – Tropical Pacific*. New World Publications, Inc., Jacksonville, Florida, USA. 514 pp.
- Walker, A. O., 1887. Notes on a collection of crustacea from Singapore. *Journal of the Linnean Society of London*. 20 (118): 107-117, pls. 6-9.

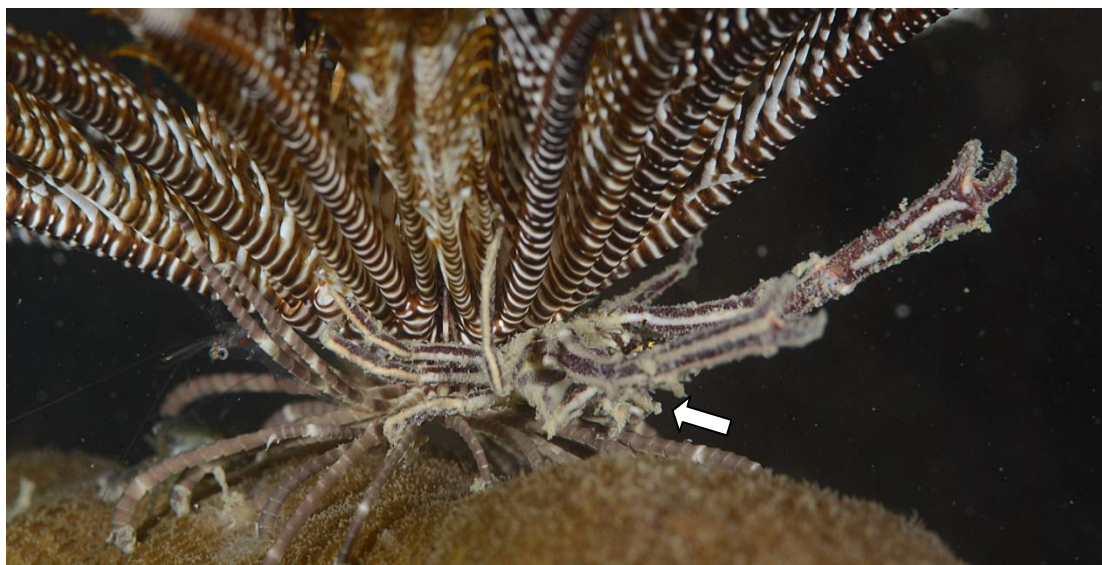


Fig. 1. In-situ image of horned crinoid crab (position of body indicated with arrow) at the base of a comatulid crinoid. Photograph by Tan Heok Hui



Fig. 2. Dorsal (top) and ventral views of *Ceratocarcinus longimanus* (ZRC 2014.0290), male of 13.0 mm carapace width. Photograph by Tan Heok Hui

Contributors: **Tan Heok Hui** & **Tan Siong Kiat**
Contact address: nhmth@nus.edu.sg (H. H. Tan)