

Biodiversity Record: Zebra crabs, *Zebrida adamsii*, at East Coast Park

Thio Hui Bing

Marine Parade Road, Singapore 449294; Email: staad3@yahoo.com

Recommended citation. Thio HB (2021) Biodiversity Record: Zebra crabs, *Zebrida adamsii*, at East Coast Park. Nature in Singapore, 14: e2021061. DOI: 10.26107/NIS-2021-0061

Subjects: Zebra crab, *Zebrida adamsii* (Crustacea: Decapoda: Brachyura: Eumedonidae);
Sea urchin, *Salmacis sphaeroides* (Echinoidea: Camarodonta: Temnopleuridae).

Subjects identified by: Thio Hui Bing.

Location, date and time: Singapore Strait, beach at East Coast Park; 29 April 2021; 0548–0620 hrs.

Habitat: Marine. Intertidal zone of reclaimed sandy beach, on a patch of seagrass during low tide.

Observer: Thio Hui Bing.

Observations: Two examples of zebra crab, each around 1 cm in carapace width, were observed on the surface of two sea urchins, which were about 50 m apart from each other (see Figs. 1, 2). Both urchins and crabs were found exposed on the substrate, almost completely out of water. The carapace markings of one crab individual appear paler than the markings of the other crab (Fig. 2).

Remarks: In Singapore, zebra crabs are found on *Salmacis sphaeroides* sea urchins, and are suspected to feed on their hosts' tube feet and tissues. These crabs appear to be locally uncommon, with one recently recorded from Changi Beach (Choy et al., 2017). Their apparent rarity could be due to their cryptic colour pattern, which affords them excellent camouflage among the urchin's spines.

Literature cited:

Choy C, Ying LSM, Lee SHR, Choo MA & Neo ML (2017) Zebra crab on a sea-urchin at Changi Beach. Singapore Biodiversity Records, 2017: 96.

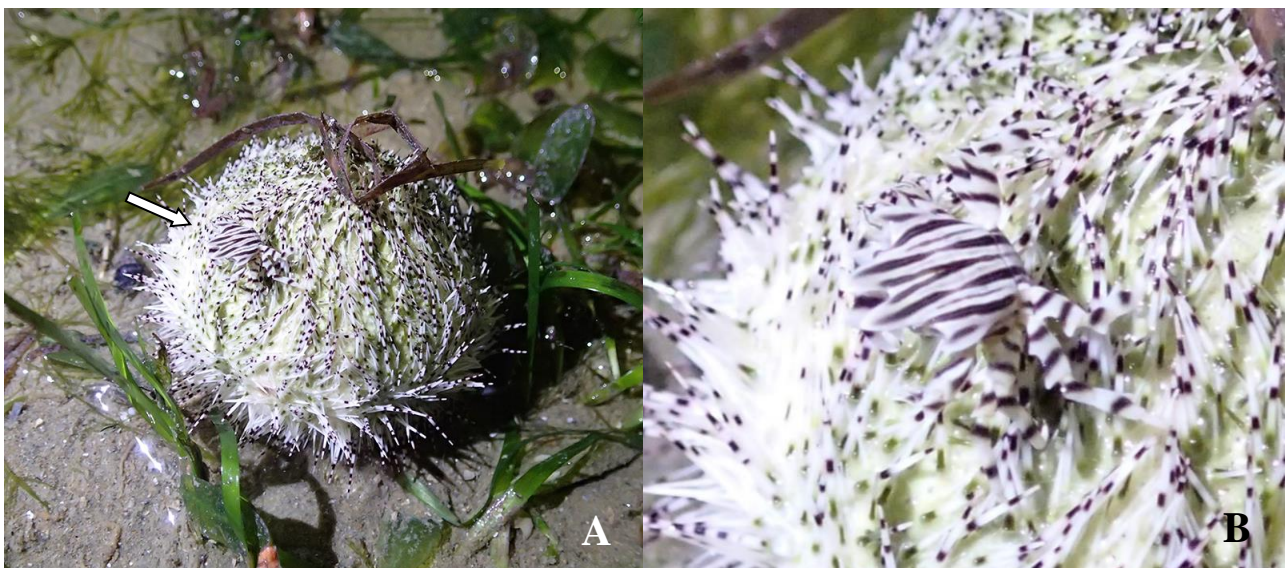


Fig. 1. The first zebra crab on the surface of a *Salmacis sphaeroides* sea urchin. A, zebra crab (indicated by arrow) and sea urchin; B, close-up, dorso-lateral view of the crab. (Photographs by: Thio Hui Bing).



Fig. 2. The second zebra crab on the surface of another *Salmacis sphaeroides* sea urchin. A, zebra crab (indicated by arrow) and sea urchin; B, close-up, dorso-lateral view of the crab. Note the paler stripes on its carapace. (Photographs by: Thio Hui Bing).