

## **Biodiversity Record: Another spotfin frogfish off Pulau Hantu**

Toh Chay Hoon<sup>1\*</sup> & Robert Tan<sup>2</sup>

<sup>1</sup>Faculty of Science, National University of Singapore, Singapore 117546; Email: [chtoh@nus.edu.sg](mailto:chtoh@nus.edu.sg) (\* corresponding author)

<sup>2</sup>Youngberg Terrace, Singapore 357741

**Recommended citation.** Toh CH & Tan R (2021) Biodiversity Record: Another spotfin frogfish off Pulau Hantu. *Nature in Singapore*, 14: e2021020. DOI: 10.26107/NIS-2021-0020

---

**Subject:** Spotfin frogfish, *Abantennarius nummifer* (Teleostei: Lophiiformes: Antennariidae).

**Subject identified by:** Kelvin K. P. Lim.

**Location, date and time:** Singapore Strait off western Pulau Hantu, north jetty; 20 June 2020 at around 1219 hrs, and 21 June 2020 at around 1215 hrs.

**Habitat:** Marine. Coral reef, at around 11 m deep.

**Observers:** Robert Tan (on 20 June 2020) and Toh Chay Hoon (on 21 June 2020).

**Observation:** An example of about 10 cm in total length was observed nestled among corals (Figs. 1–4) at the same spot over two days.

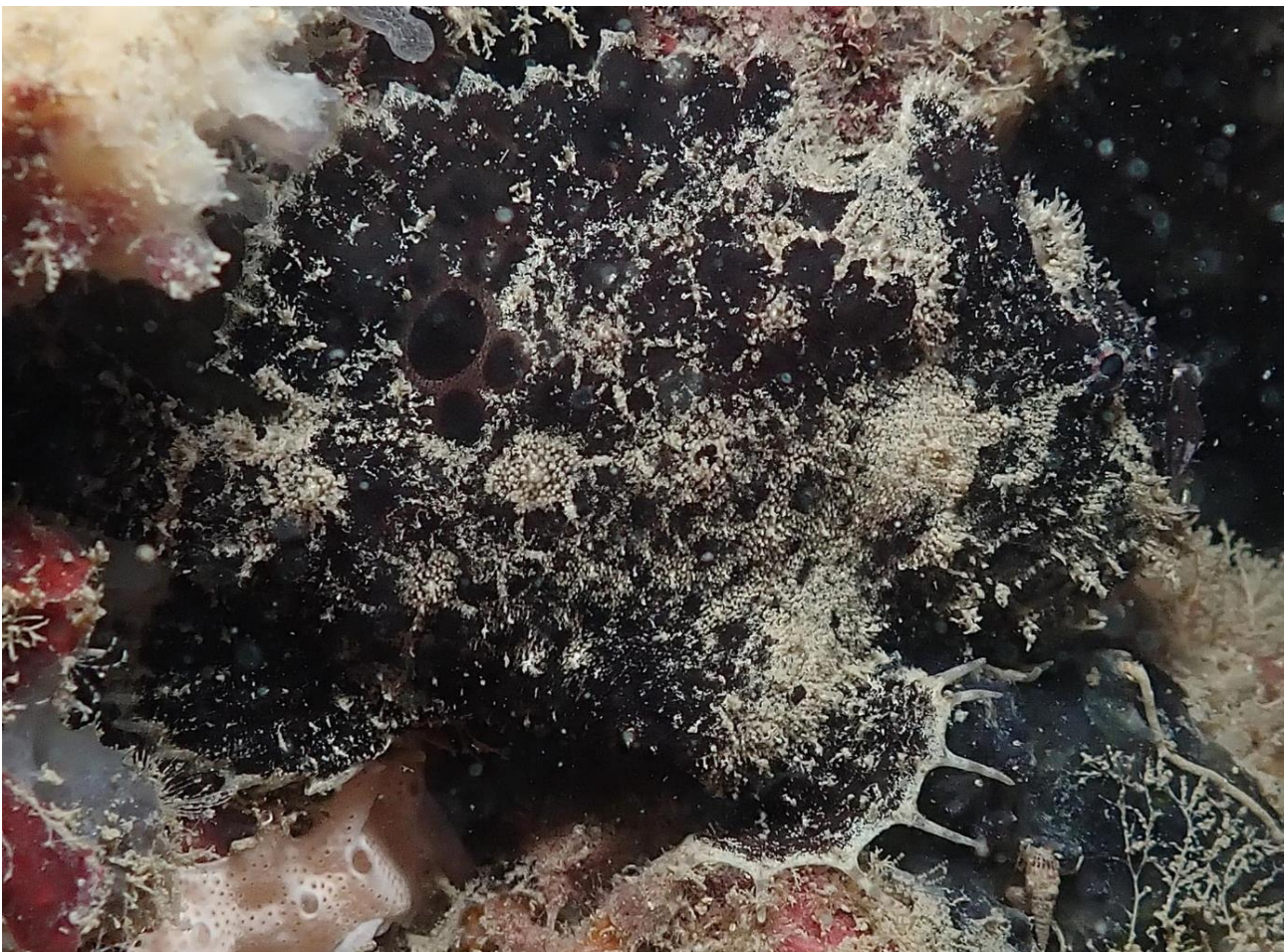


Fig. 1. Lateral view, on 21 June 2020, of the right side of the spotfin frogfish. (Photograph by: Toh Chay Hoon).



Fig. 2. Lateral view, on 20 June 2020, of the right side of the spotfin frogfish with its head facing right. (Photograph by: Robert Tan).

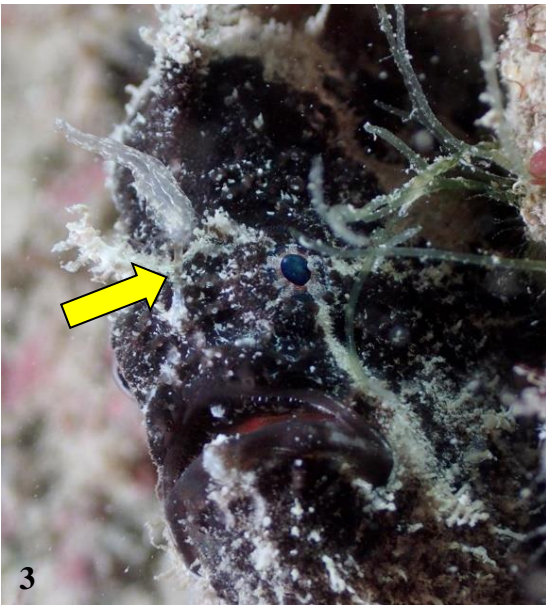


Fig. 3. Latero-frontal view of the head of the spotfin frogfish with a relatively short illicium (indicated by arrow). (Photograph by: Robert Tan).



Fig. 4. Lateral view of the rear end of the left side of the spotfin frogfish, showing a large ocellus (indicated by arrow) at the dorsal fin base, dorsal and anal fins that are not joined to the caudal peduncle, and the absence of translucent spots on the caudal fin. (Photograph by: Robert Tan).

**Remarks:** The featured specimen was about twice the size of the previous example, which was 5 cm in total length and sighted in the same general area on 22 September 2019 (Tan & Toh, 2019, as *Antennatus nummifer*). This individual possesses the diagnostic features that include a short illicium about equal in length to the second dorsal fin spine (Fig. 3); a relatively straight second dorsal fin spine; a caudal peduncle that is not joined to the rear ends of the dorsal and anal fins; and a darkly pigmented round spot at the dorsal fin base (Fig. 4) (see Pietsch & Arnold, 2020). This species is presently classified in the genus *Abantennarius* (after Pietsch & Arnold, 2020).

**Literature cited:**

Pietsch TW & Arnold RJ (2020) Frogfishes. Biodiversity, Zoogeography, and Behavioural Ecology. Johns Hopkins University Press, Baltimore, USA, xiv + 601 pp.  
Tan TS & Toh CH (2019) Rediscovery of spotfin frogfish in Singapore. Singapore Biodiversity Records, 2019: 141–142.