

Erratum to Huang SB, Tian MY & Faille A (2020) Two new species of subterranean ground beetles from China (Coleoptera: Carabidae: Trechinae). Raffles Bulletin of Zoology, Supplement 35: 22–31.

P. 25, Fig. 2. The figure provided is incorrect. The replacement for Fig. 2 is provided here.

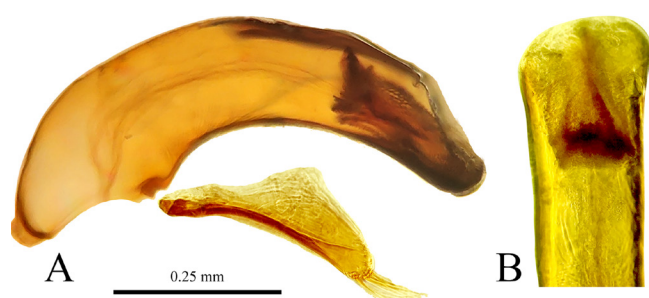


Fig. 2. *Shilinothrechus anthonyi*, new species, male genitalia. A, median lobe and parameres, lateral view; B, apical lobe, dorsal view.