

## Brown anole at the Singapore Botanic Gardens

**Subject:** Brown anole, *Norops sagrei* (Reptilia: Sauria: Dactyloidae).

**Subject identified by:** Contributors & Sankar Ananthanarayanan.

**Location, date and time:** Singapore Island, Singapore Botanic Gardens, National Parks Board Headquarters entrance facing the Evolution Garden; 14 April 2017; 1020 hrs.

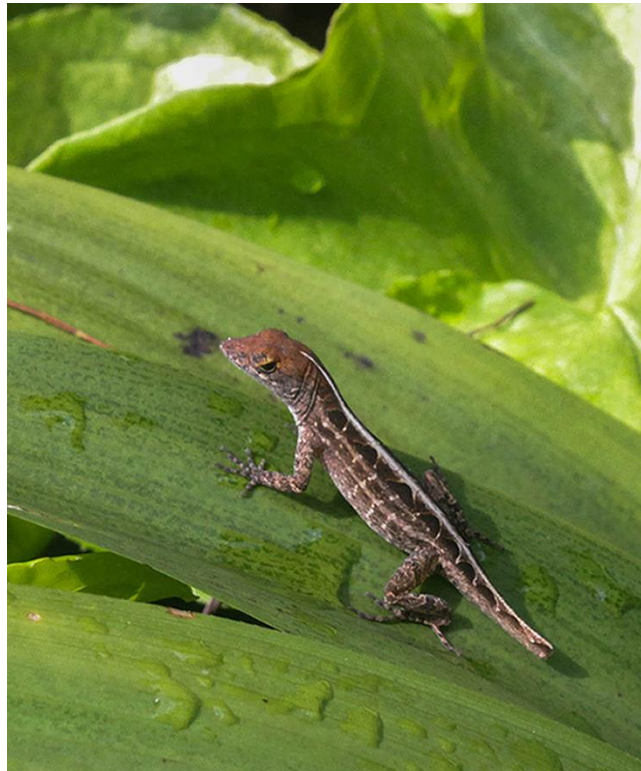
**Habitat:** Urban parkland. Managed vegetation of ornamental plants, shrubs and trees; surrounding area includes a road and concrete buildings.

**Observers:** Claudia L. Y. Tan, Henrietta P. M. Woo, Jacqueline L. E. Chua & David T. C. Chua.

**Observation:** A juvenile example of about 5 cm from snout to tip of broken tail, was spotted moving swiftly towards an exposed part of an ornamental plant, possibly to bask (see accompanying picture). It darted away as the contributors got too close.

**Remarks:** Believed to have been brought into Singapore on imported ornamental plants, the brown anole has mostly been restricted in the Marina Bay area (Tan & Lim, 2012). However, an individual has recently been spotted in a residential estate in Bishan (Woo & Wee, 2015), and the present sighting indicates that it has spread further inland on Singapore Island.

The brown anole is suspected to be invasive in Florida, USA, where it could have driven the decline of the native green anole (*Anolis carolinensis*) by feeding on its hatchlings (Meshaka, 2011). This species is also reported to have significantly altered ant communities in betel-nut palm plantations in southern Taiwan (Hwang, 2008). It is not known if it would negatively impact native biodiversity in Singapore (Tan & Lim, 2012).



Photograph by Claudia L. Y. Tan

### References:

- Huang, S.-C., G. Norval & I.-M. Tso, 2008. Predation by an exotic lizard, *Anolis sagrei*, alters the ant community structure in betelnut palm plantations in southern Taiwan. *Ecological Entomology*. 33: 569-576.
- Meshaka, W. E. Jr., 2011. A runaway train in the making: The exotic amphibians, reptiles, turtles, and crocodylians of Florida. *Herpetological Conservation & Biology*. 6: 1-101.
- Tan H. H. & K. K. P. Lim, 2012. Recent introduction of the brown anole *Norops sagrei* (Reptilia: Squamata: Dactyloidae) to Singapore. *Nature in Singapore*. 5: 359-362.
- Woo W. X. & S. X. R. Wee, 2015. Brown anole at Bishan. *Singapore Biodiversity Records*. 2015: 61.

Contributors: Claudia L. Y. **Tan**, Jacqueline L. E. **Chua** & Henrietta P. M. **Woo**  
Contact address: [claudiatan@nus.edu.sg](mailto:claudiatan@nus.edu.sg) (Tan)