

Banded leaf monkey feeding on seed pods of rain tree

Subjects: Banded leaf monkey, *Presbytis femoralis* (Mammalia: Primates: Cercopithecidae);
Rain tree, *Albizia saman* (Magnoliophyta: Fabales: Fabaceae).

Subjects identified by: Serin Subaraj.

Location, date and time: Singapore Island, Old Upper Thomson road; 15 April 2016; 1037 hrs.

Habitat: Edge of secondary forest adjacent to a road.

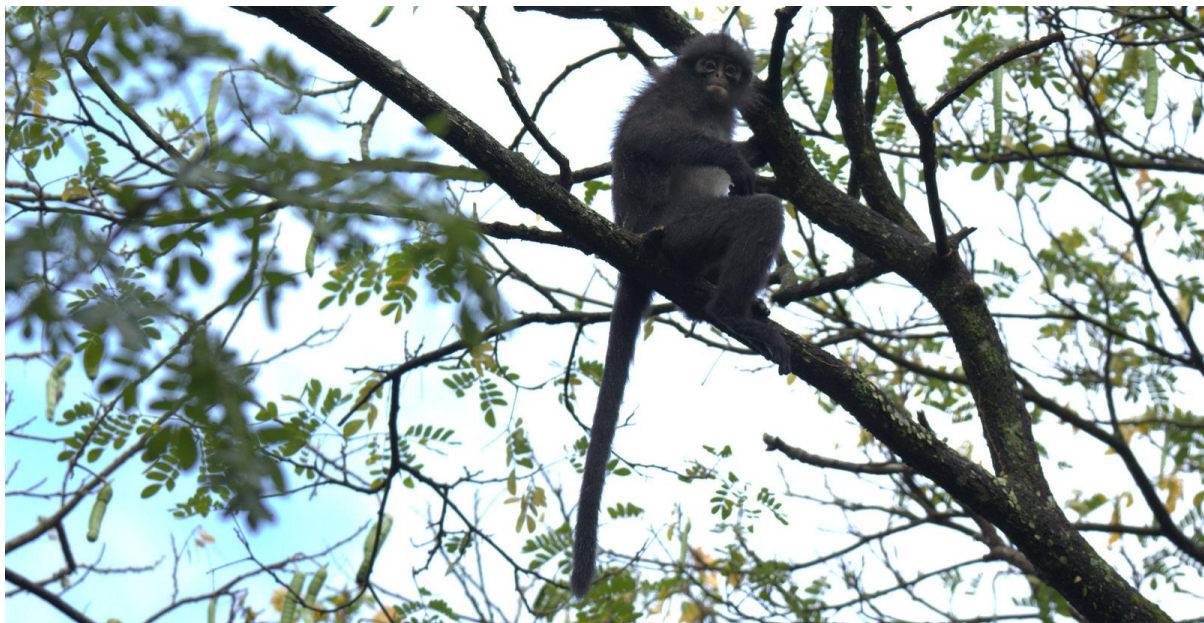
Observers: Contributors with Nick Baker.

Observation: A group of three individuals was foraging at the forest edge. One of them crossed the road via interlocking tree canopies onto a rain tree. It was then observed eating the pods, and presumably the seeds, of the rain tree (see accompanying picture). These monkeys appeared to be undisturbed by the human observers and noisy vehicles along the road.

Remarks: The banded leaf monkey is regarded as a ‘critically endangered’ species in Singapore. It is known to be primarily herbivorous with fruit and new leaves forming the most part of its diet (Lim et al., 2008: 198). At least 53 species of plants have been identified from DNA sequencing of fecal samples obtained in Singapore. They consist of both native and exotic taxa (Amrita et al., 2016: 4-5). However, the list does not include the rain tree. The present observation, therefore, adds another exotic species to the diet of the banded leaf monkey.

References:

- Amrita S., A. Ang, A. P. Vogler & R. Meier, 2016. Fecal metagenomics for the simultaneous assessment of diet, parasites, and population genetics of an understudied primate. *Frontiers in Zoology*. 13:17. pp. 1-13.
- Lim, K. K. P., R. Subaraj, S. H. Yeo, N. Lim, D. Lane & B. Y. H. Lee, 2008. Mammals. In: Davison, G. W. H., P. K. L. Ng & H. C. Ho (eds.). *The Singapore Red Data Book. Threatened Plants & Animals of Singapore*. Second edition. Nature Society (Singapore). pp. 190-207.



Photograph by Law Ing Sind

Contributors: **Law Ing Sind** & **Serin Subaraj**

Contact address: lawingsind@yahoo.com.sg (Law)