

## Recent sightings of shoulder-spot wrasse in Singapore waters

**Subjects:** Shoulder-spot wrasse, *Leptojulius cyanopleura* (Teleostei: Labridae).

**Subjects identified by:** Contributor.

**Location, date and time:** Singapore Strait -

- 1) off Sisters Islands, at 5 m depth; 8 January 2014; around 1300 hrs;
- 2) off western Pulau Hantu, at 8-9 m depth; 1 May 2015; 1418 hrs.

**Habitat:** Marine. 1) Fringing coral reef with silty substrates. 2) Sunken boat wreck in silty area.

**Observers:** Contributors.

**Observations:**

- 1) One individual of about 10 cm total length was observed by Jeffrey Low off Sisters Islands (Fig. 1).
- 2) A group of four examples, the largest about 10 cm total length, were recorded by Koh Kwan Siong at the boat wreck off Pulau Hantu (Fig. 2).

**Remarks:** This species seems to be poorly known in Singapore waters. It was last recorded from there by Randall & Ferraris (1981) and Randall (1996).

**References:**

- Randall, J. E. & C. J. Ferraris, 1981. A revision of the Indo-Pacific labrid fish genus *Leptojulius* with descriptions of two new species. *Revue française d'Aquariologie Herpétologie*. 8 (3): 89-96.
- Randall, J. E., 1996. Second revision of the labriid fish genus *Leptojulius*, with descriptions of two new species. *Indo-Pacific Fishes*. 24: 1-20.



Fig. 1. The single example off Sisters Islands.  
Photograph by Jeffrey K. Y. Low

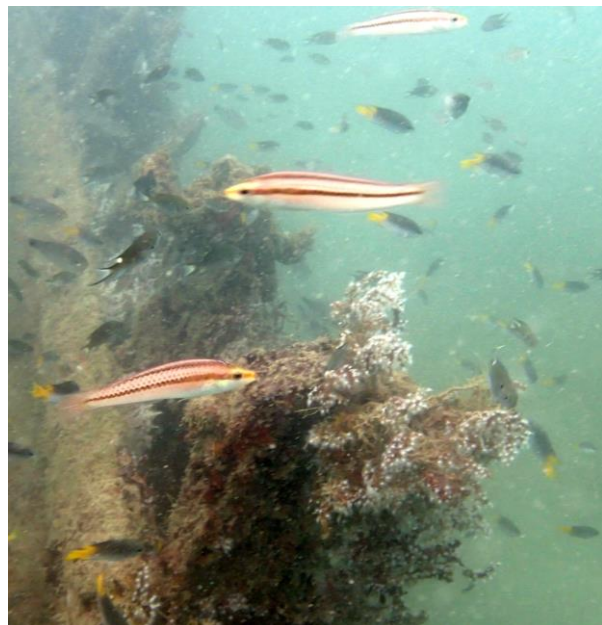


Fig. 2. Three of the four individuals at the boat wreck  
off Pulau Hantu. Photograph by Koh Kwan Siong

Contributors: Jeffrey K. Y. **Low** & **Koh** Kwan Siong

Contact addresses: [Jeffrey\\_low@nparks.gov.sg](mailto:Jeffrey_low@nparks.gov.sg) (Low), [koh\\_kwan\\_siong@nparks.gov.sg](mailto:koh_kwan_siong@nparks.gov.sg) (Koh)