

## Batfishes off Pulau Hantu

**Subjects:** Batavia batfish, *Platax batavianus* (Teleostei: Ehippidae), Fig. 1;  
Longfin batfish, *Platax pinnatus* (Teleostei: Ehippidae), Fig. 2;  
Blunthead batfish, *Platax teira* (Teleostei: Ehippidae), Fig. 3.

**Subjects identified by:** Kelvin K. P. Lim & Koh Kwan Siong.

**Location, date and time:** Singapore Strait, off western Pulau Hantu; 1 May 2015; 1400-1440 hrs.

**Habitat:** Marine. Open seabed next to a coral reef, around a sunken boat wreck, at around 9 m depth.

**Observers:** Koh Kwan Siong and others.

**Observation:** One each of three species of batfish, all adults, were observed swimming around the wreck. The three individuals were not observed to be interacting with one another.

**Remarks:** All three species of *Platax* have been recorded from Singapore waters (Fowler, 1938: 174-175, as *Platax pinnatus*). The Batavia batfish (Fig. 1) is comparatively slender with shorter fins and a distinct hump on the head in front of the eyes. The longfin batfish (Fig. 2) has longer fins and appear relatively tall. The profile of its head in front of the eyes is concave. The blunthead batfish (Fig. 3) is darker coloured at the rear part of its body, and there is a distinct black blotch on the side of its abdomen above the anus (see Allen & Erdmann, 2012: 1003-1005).

### References:

Allen, G. R. & M. V. Erdmann, 2012. *Reef Fishes of the East Indies. Vol. III*. Tropical Reef Research, Perth, Australia. pp. 857- 1292.  
Fowler, H. W., 1938. A list of the fishes known from Malaya. *Fisheries Bulletin*. 1: 1-268.

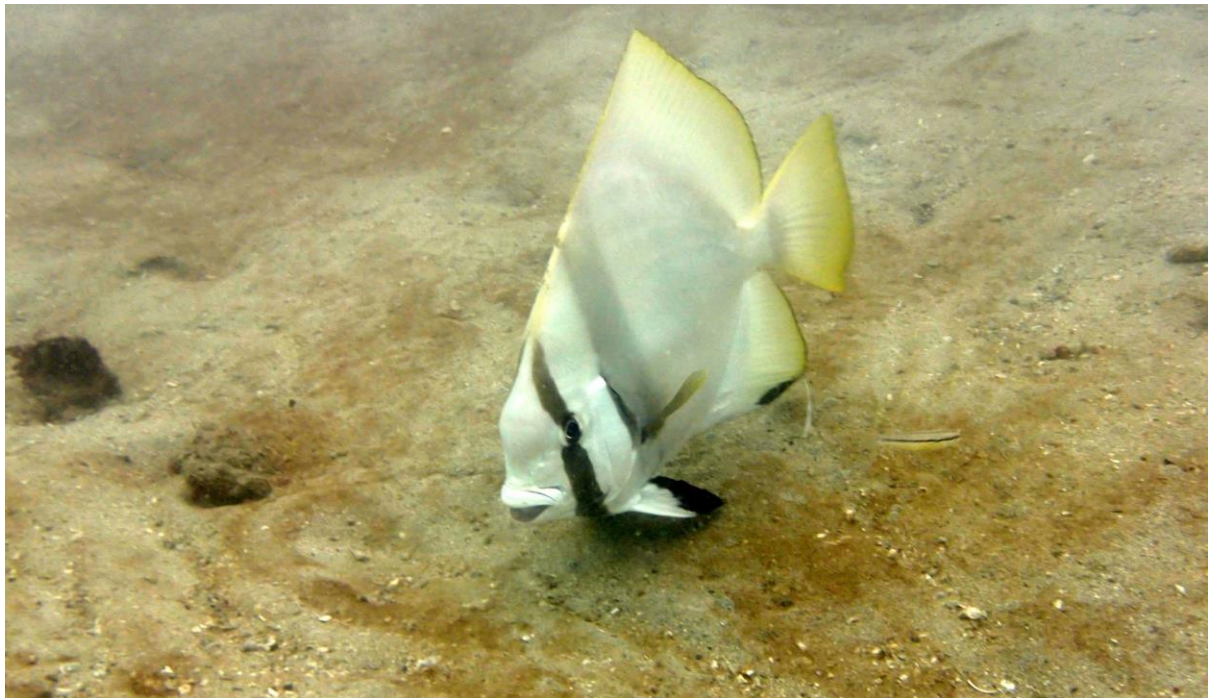


Fig. 1. Adult Batavia batfish, *Platax batavianus* of about 47 cm TL. Note relatively slender appearance with hump in front of the eye. Photograph by Koh Kwan Siong.



Fig. 2. Longfin batfish, *Platax pinnatus* of about 34 cm total length. Note concave head profile.



Fig. 3. Blunthead batfish, *Platax teira* of about 40 cm total length. Note diagnostic black blotch on the side of the abdomen above the anus.

Photographs by Koh Kwan Siong

Contributor: **Koh** Kwan Siong  
Contact address: [marineastic@gmail.com](mailto:marineastic@gmail.com)