

New Singapore record of sea slug genus *Noalda* from Pulau Hantu

Subject: *Noalda* sp. (Mollusca: Gastropoda: Aglajidae).

Subject identified by: Contributor.

Location, date and time: Singapore Straits, Pulau Hantu; 22 October 2014; around 1030hrs.

Habitat: Marine. Coral reef at depth of about 12 m, on silty substrate.

Observer: Contributor.

Observation: One example of about 2 mm total length was observed crawling on the substrate (Fig. 1).

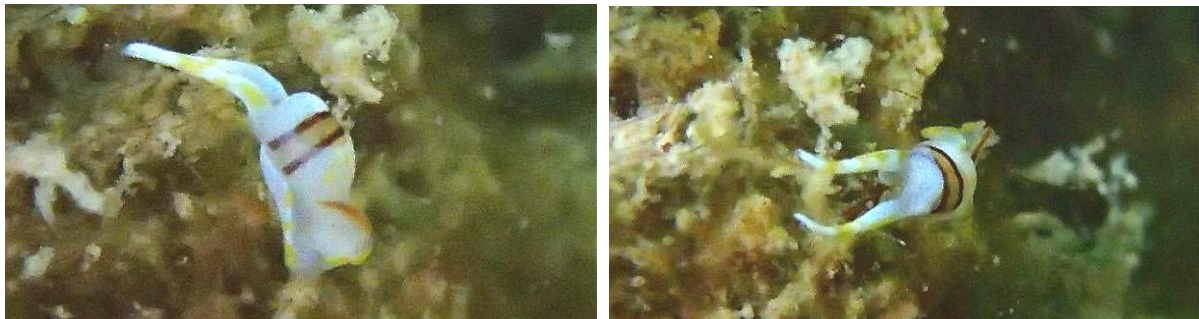


Fig. 1. In-situ views of the dorso-lateral (left) and rear (right) aspects of *Noalda* on the reef. Photographs by Toh Chay Hoon

Remarks: This genus of sea slug, not listed by Tan & Woo (2010), seems to be a new record for Singapore waters. The specimen was collected and deposited at the Zoological Reference Collection of the Lee Kong Chian Natural History Museum at the National University of Singapore. Fig. 2 shows a close-up of the dorsal aspect of the specimen.

References:

- Tan S. K. & H. P. M. Woo, 2010. *A Preliminary Checklist of the Molluscs of Singapore*. Raffles Museum of Biodiversity Research, National University of Singapore. 80 pp.
- Rudman, W.B., 2010 (February 19). *Noalda exigua* (Hedley, 1912). *Sea Slug Forum*. Australian Museum, Sydney. <http://www.seaslugforum.net/factsheet/noalexig>
- Rudman, W.B., 2010 (February 19). *Noalda* sp. 2. *Sea Slug Forum*. Australian Museum, Sydney. <http://www.seaslugforum.net/factsheet/noalsp2>

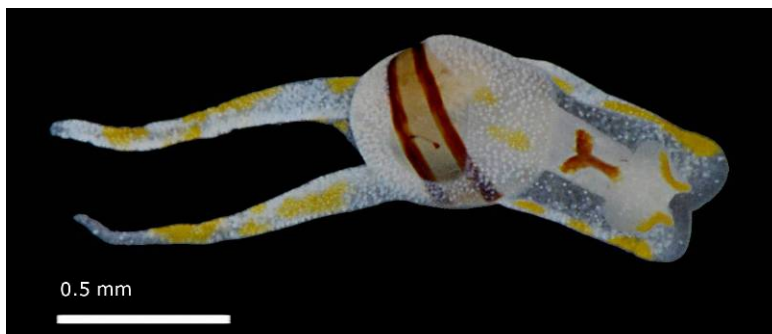


Fig. 2. Ex-situ picture of the dorsal view of the specimen of *Noalda* from Pulau Hantu. Photograph by Tan Heok Hui

Contributor: **Toh** Chay Hoon
Contact address: nhmtohc@nus.edu.sg