

## Longspine razorfish at Pulau Hantu

**Subjects:** Longspine razorfish, *Aeoliscus strigatus* (Teleostei: Centriscidae).

**Subjects identified by:** Contributor.

**Location, date and time:** Singapore Straits, off Pulau Hantu; 8 December 2013; at around 1400 hrs.

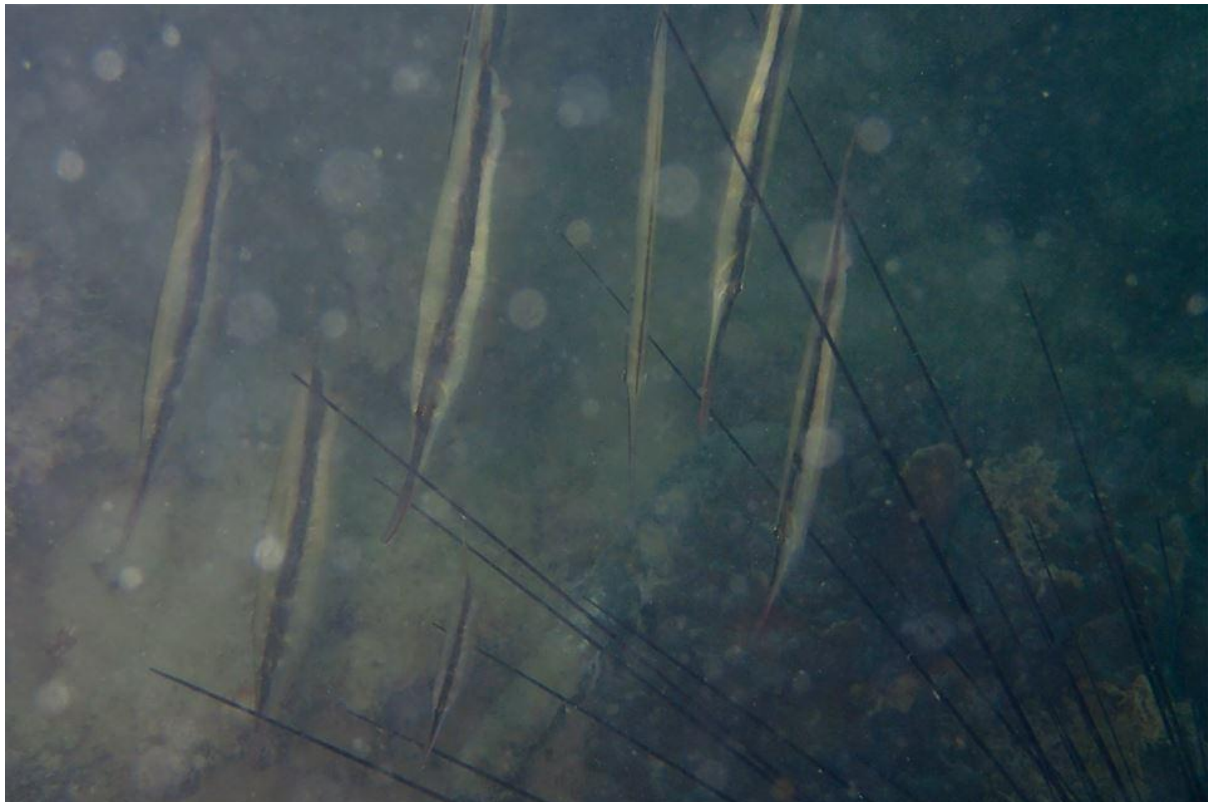
**Habitat:** Coral reef, at depth of about 5 m.

**Observer:** Contributor.

**Observation:** A group of at least 8 examples of various sizes (largest about 12 cm total length), was observed swimming near or among the spines of the long-spined sea urchin (*Diadema setosum*).

**Remarks:** The longspine razorfish is a gregarious species that occurs on coral reefs in the Singapore Straits. It is often found associating with large sea urchins and branching coral (Lim & Low, 1998: 77). Apparently this species is frequently seen by divers at Pulau Hantu.

**Reference:** Lim, K. K. P. & J. K. Y. Low, 1998. *A Guide to Common Marine Fishes of Singapore*. Singapore Science Centre. 163 pp.



Photograph by Toh Chay Hoon

Contributor: **Toh** Chay Hoon  
Contact address: [dbstohc@nus.edu.sg](mailto:dbstohc@nus.edu.sg)